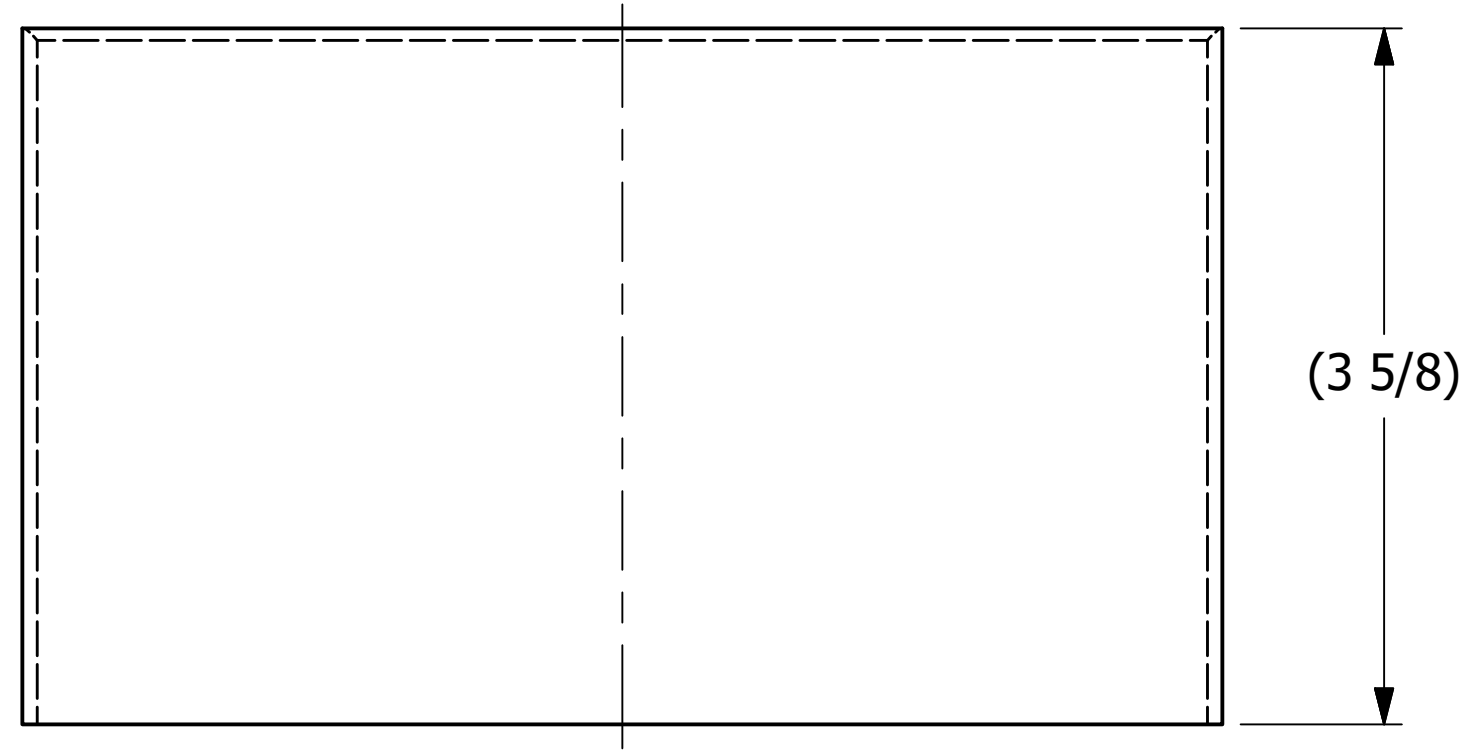
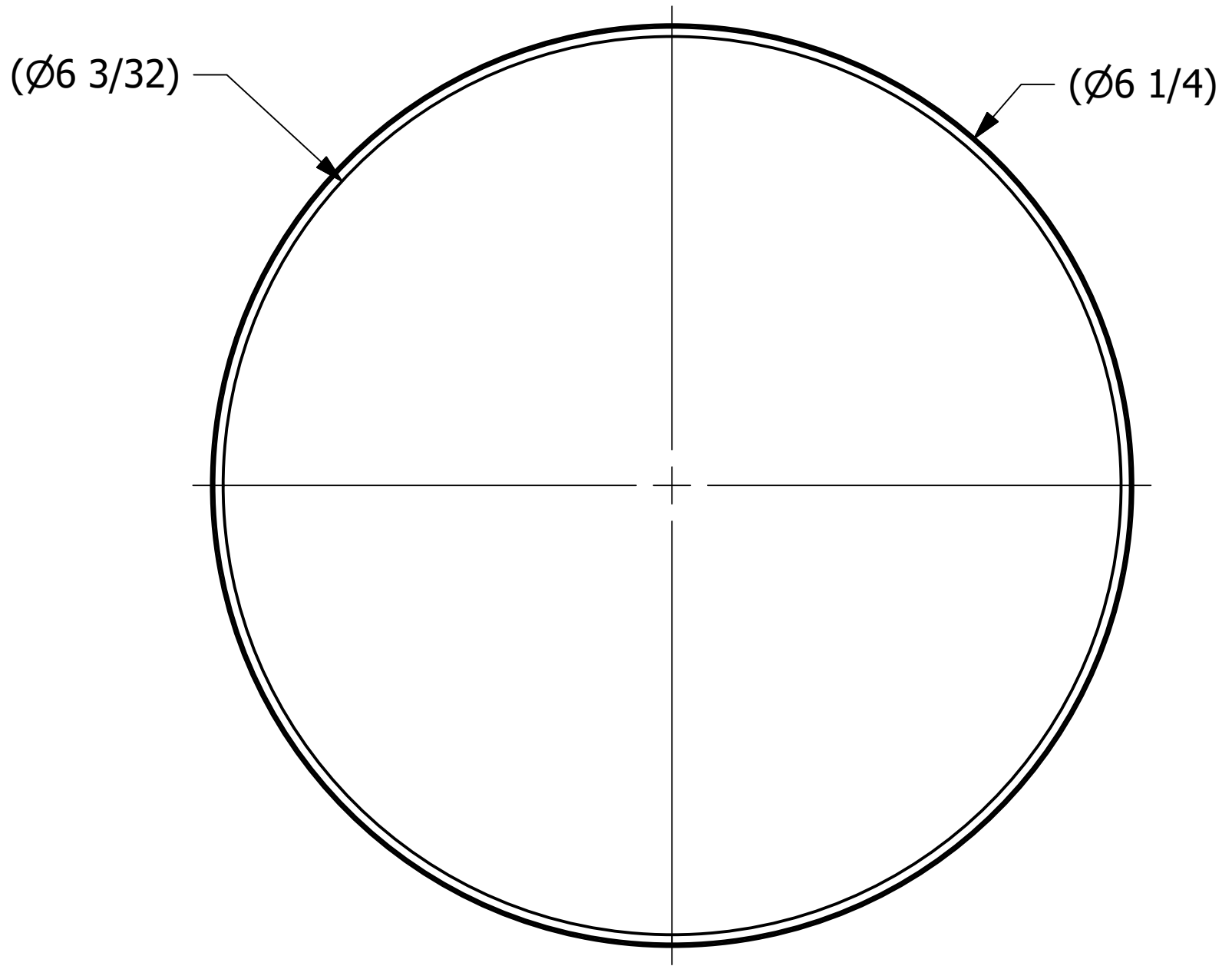


SALES DRAWING SALES DRAWING SALES DRAWING SALES DRAWING SALES DRAWING

SALES DRAWING SALES DRAWING SALES DRAWING SALES DRAWING SALES DRAWING



F	CHL	8/26/21	202108261347	CHL
REV	BY	DATE	REF #	PUB

UNLESS OTHERWISE SPECIFIED DIMENSIONAL TOLERANCES FRACTIONAL: $\pm 1/16$ X.XX: $\pm .03$ X.XXX: $\pm .015$ ANGLE: $\pm 1^\circ$ DEBURR ALL SHARP EDGES. ALL MACHINED SURFACES TO HAVE A 125 RMS FINISH UNLESS NOTED OTHERWISE. THIRD ANGLE PROJECTION	DRAWN BY:	JDA
	CHECKED BY:	EJF
	PROTOTYPE DATE:	9/15/1998
	APPROVED FOR PRODUCTION BY:	JDA
	PRODUCTION DATE:	9/15/1998
	SIZE:	C
DRAWING #:	8103	

SALCO PRODUCTS, INC.	
PART NAME: OUTLET NOZZLE	
MATERIAL: 304 SS	
PROJECT #:	SHEET #: 1 OF 1 SCALE: 1 : 1
PART #: RPSN103	